

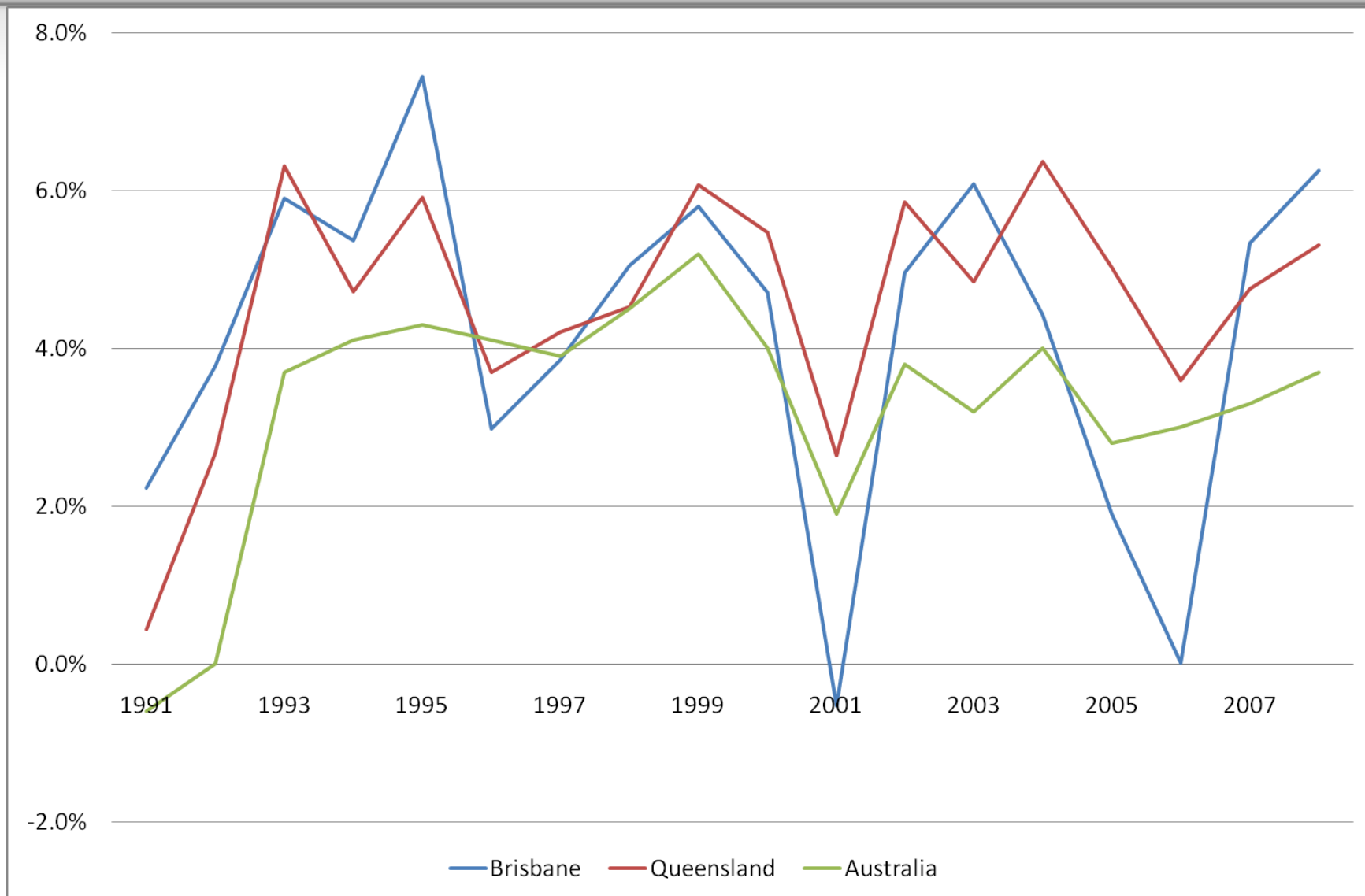
The Sunshine State and River City

Comparative Economic Performance

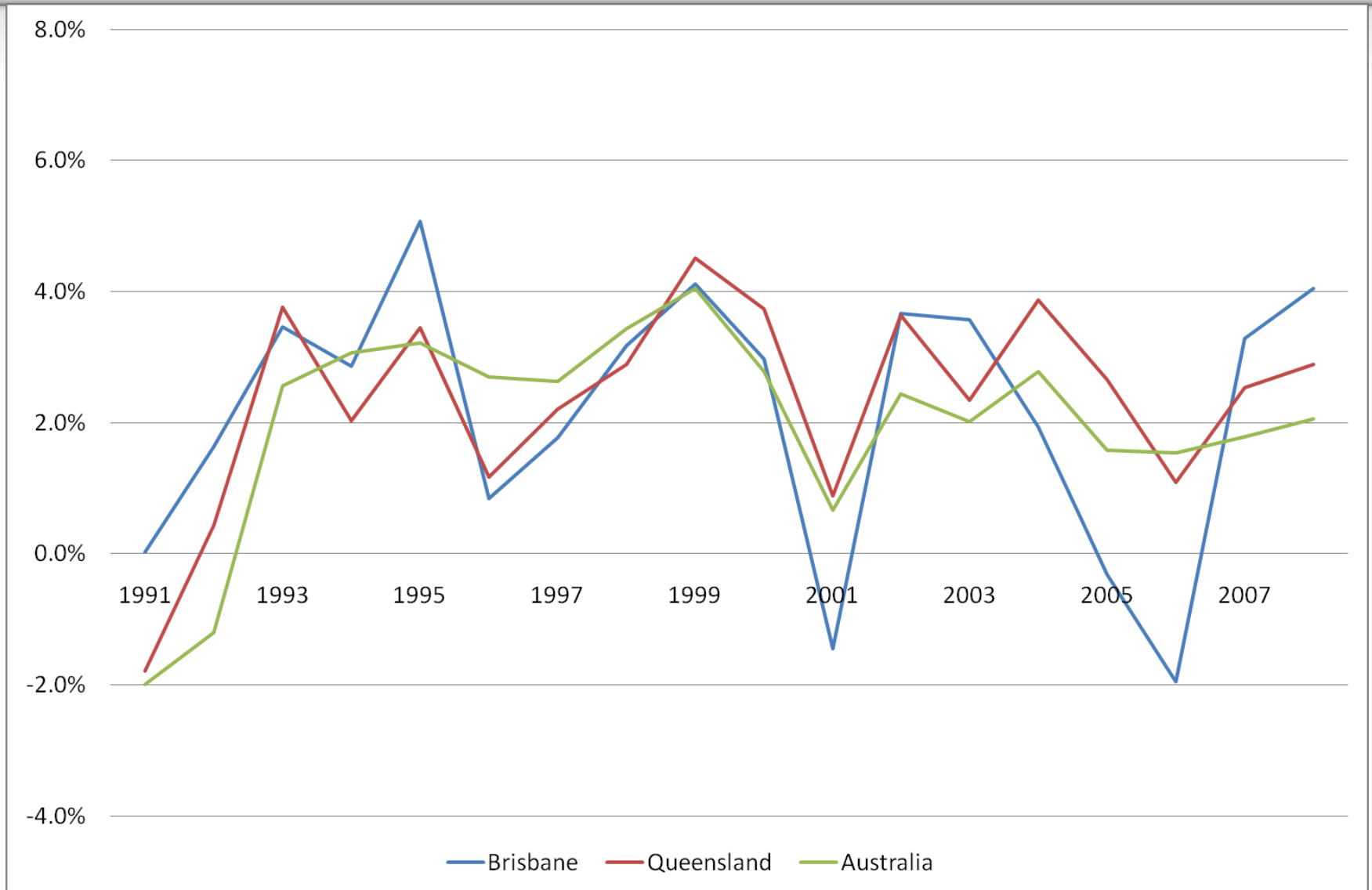
Economic Indicator

- Gross Domestic Product
- Data for:
 - Australia (Australian Bureau of Statistics).
 - Queensland (Australian Bureau of Statistics).
 - Brisbane (SGS Economics & Planning).
 - Four other major capital cities (SGS Economics & Planning).

GDP Growth Rates (Volume Measure)



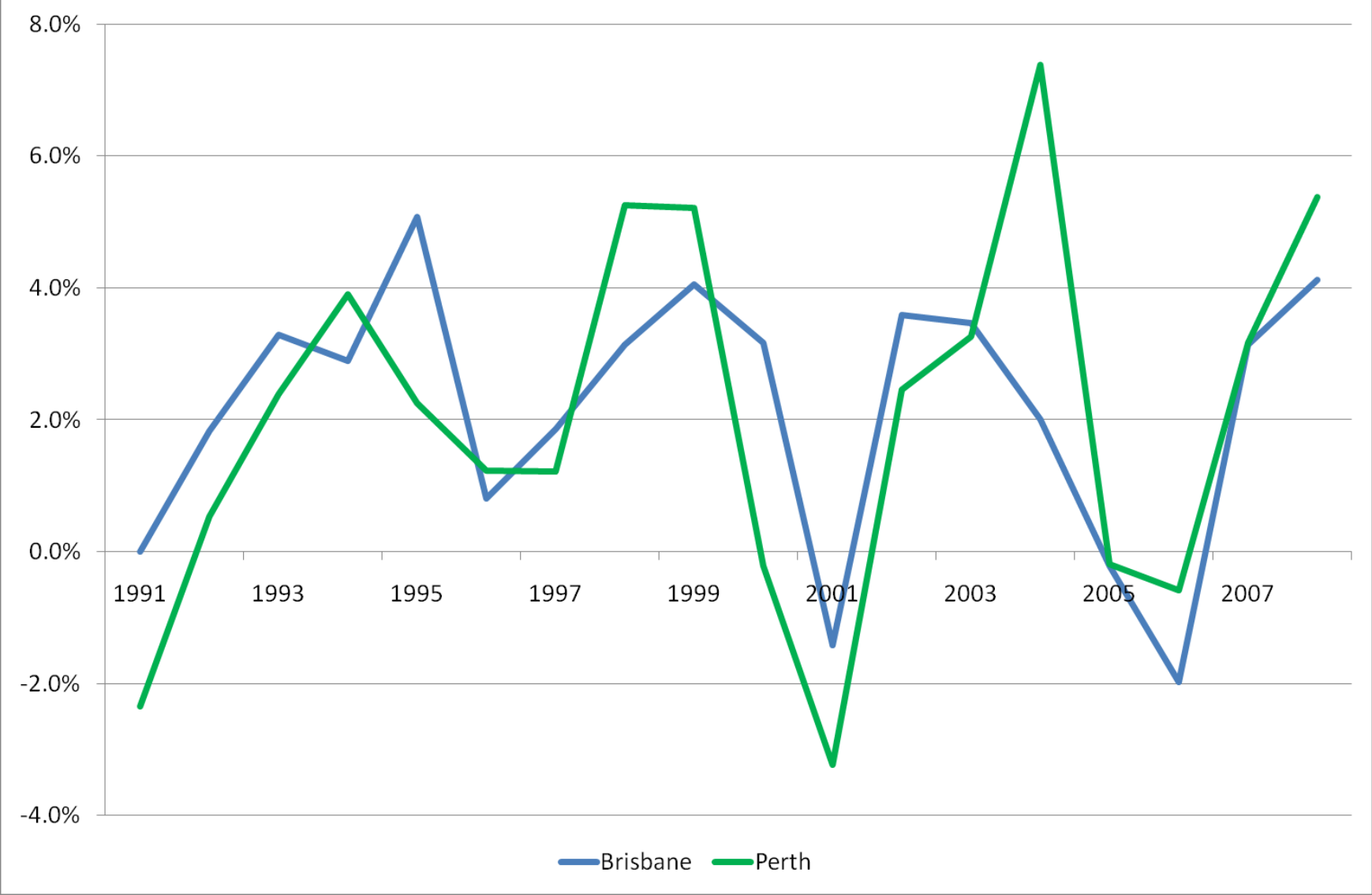
Per Capita Growth Rates



How does Brisbane Compare ?

- Per capita GDP rates for:
 - Sydney
 - Melbourne
 - Adelaide
 - Perth
- These growth rates reflect both economic growth & population growth.

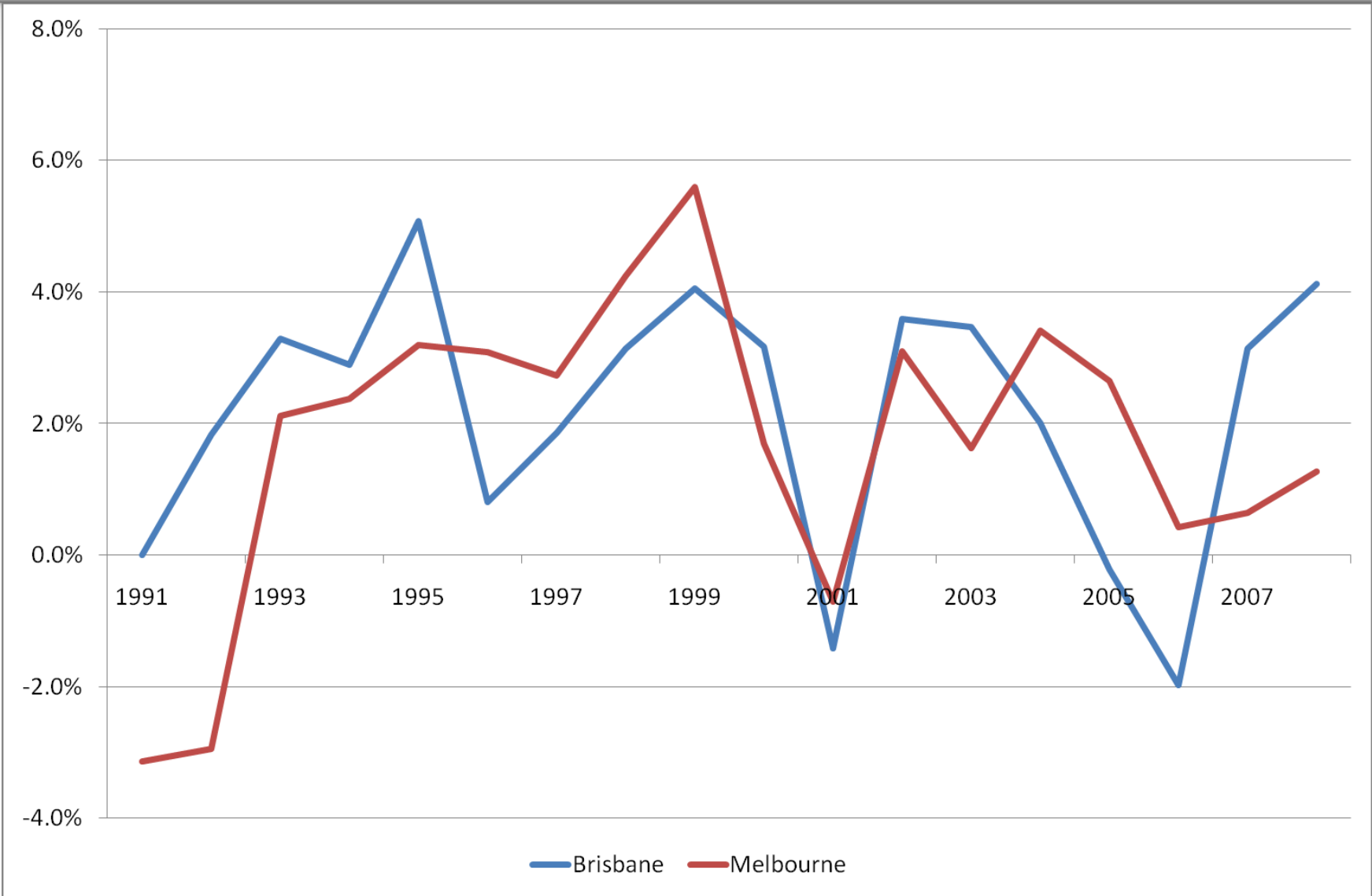
Comparison of Per Capita Growth Rates



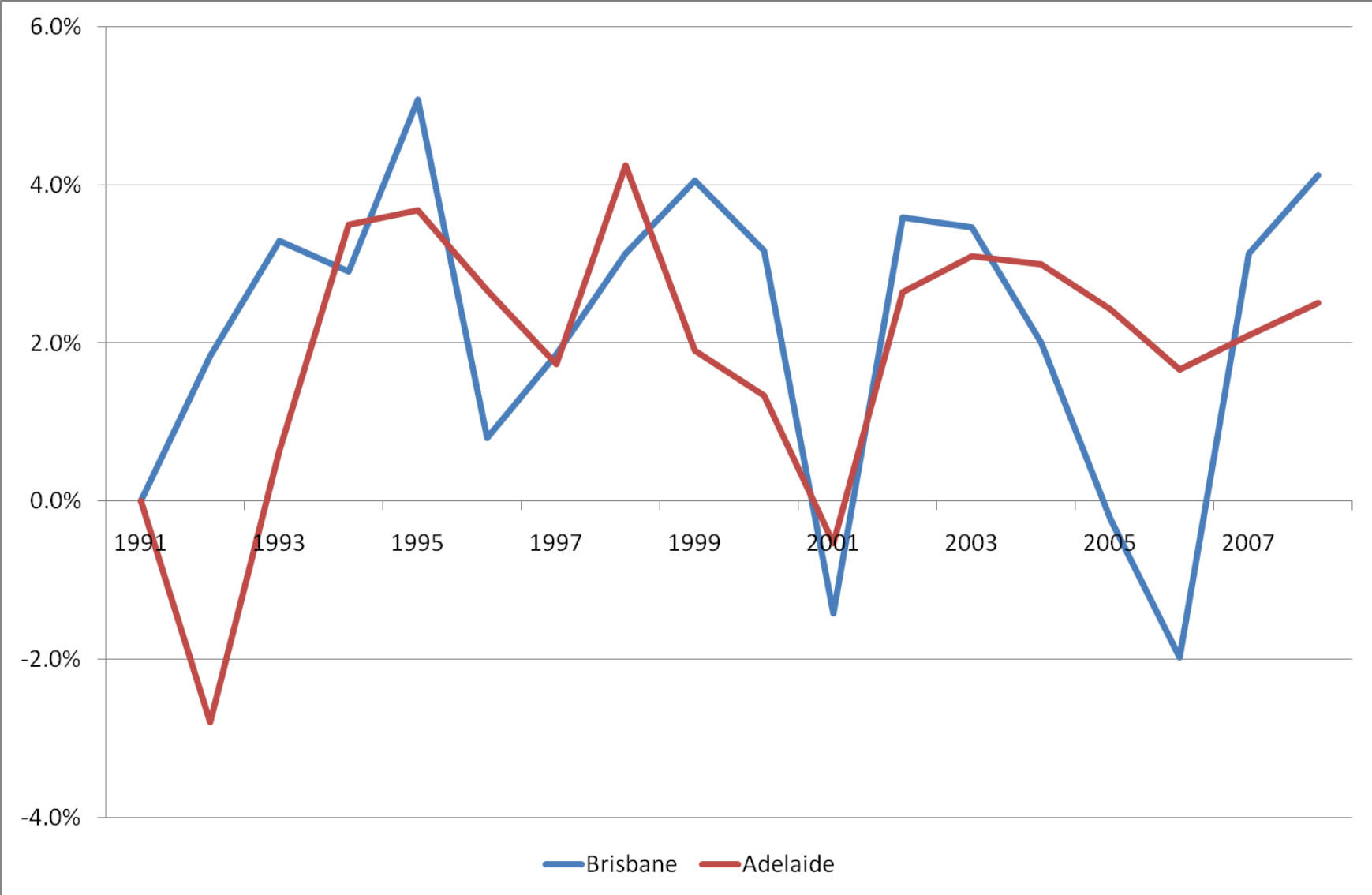
Comparison of Per Capita Growth Rates



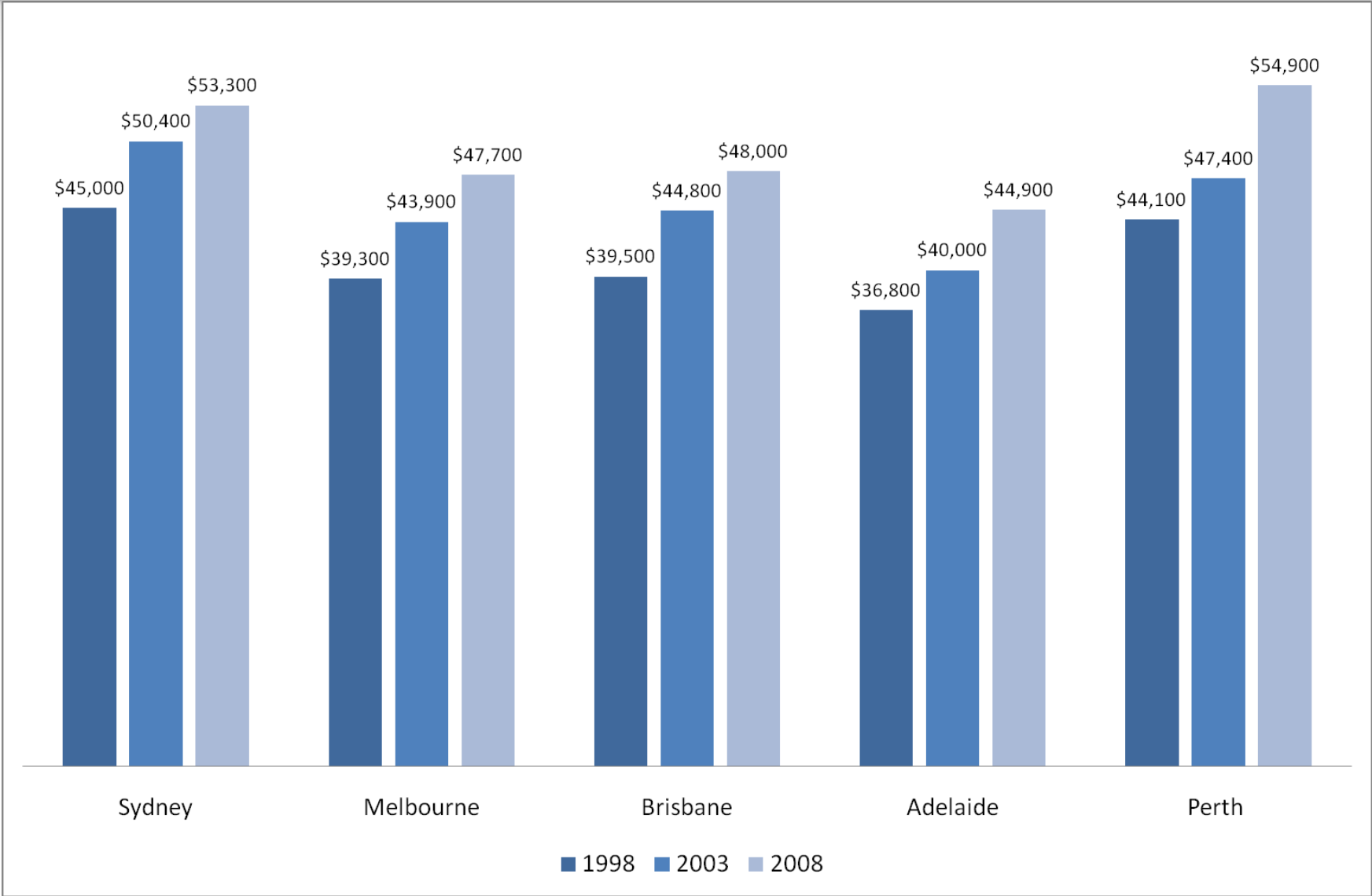
Comparison of Per Capita Growth Rates



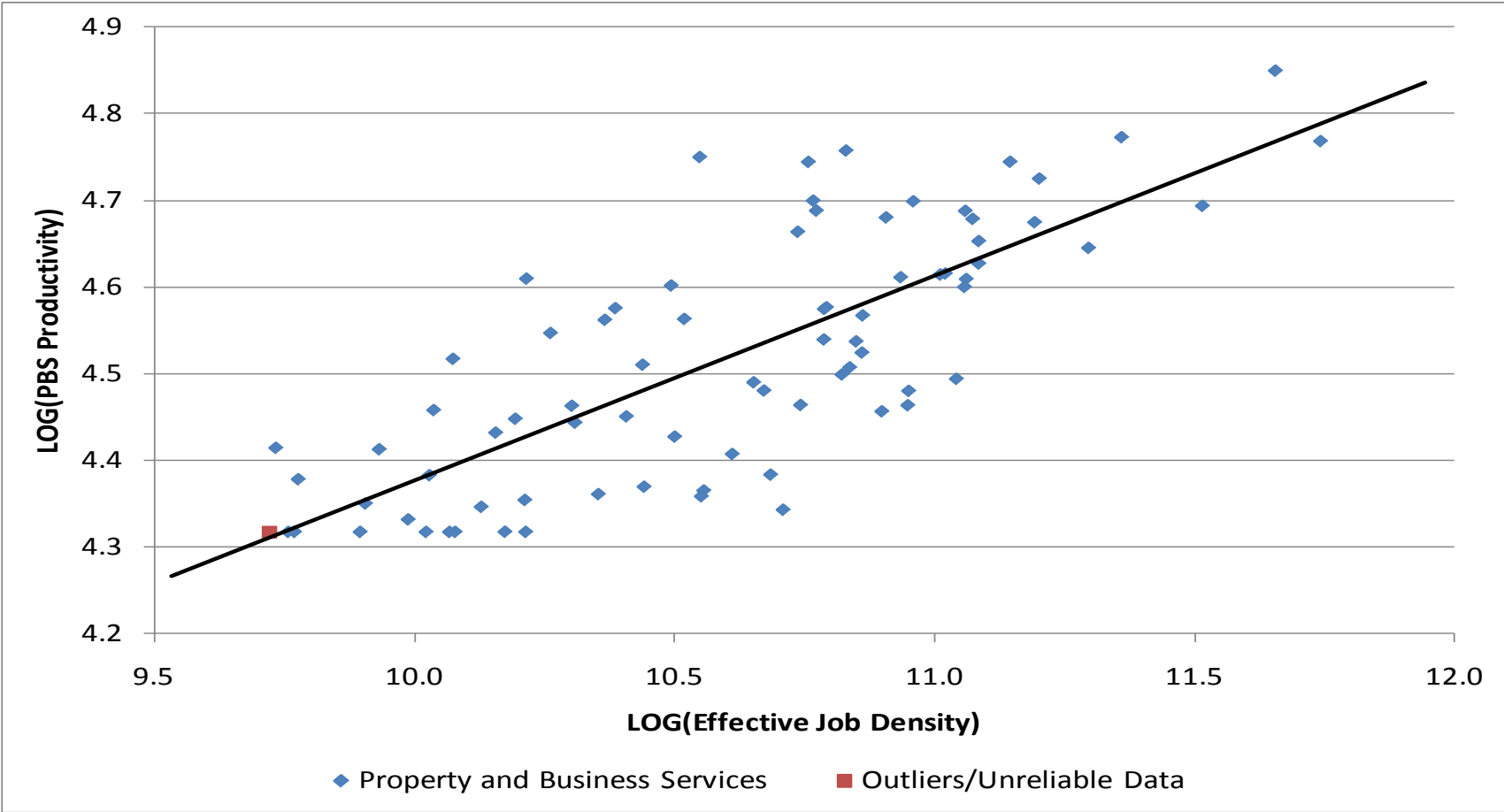
Comparison of Per Capita Growth Rates



Comparison of Per Capita Growth GDP



Effective density and business productivity



Conclusions

- Brisbane has a relatively narrowly based economy which is prone to cyclical fluctuation
- Resource development and population growth are key drivers
- It's important to emulate the 'fine grain' approach to economic development pursued in Adelaide and Melbourne
- Urban structure will be a crucial factor, as well as skills.