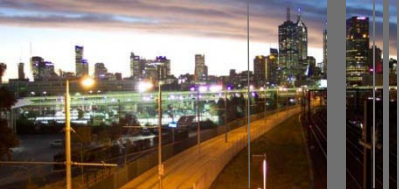


Economic Contribution of Food

14th October 2009

**Presented by
Terry Rawsley**



SGS Tasks

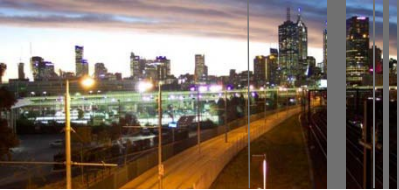
- Create a Food Satellite Account.
- Quantify the economic contribution in terms of economic activity in terms:
- Economic Activity (GDP); and
- Employment.





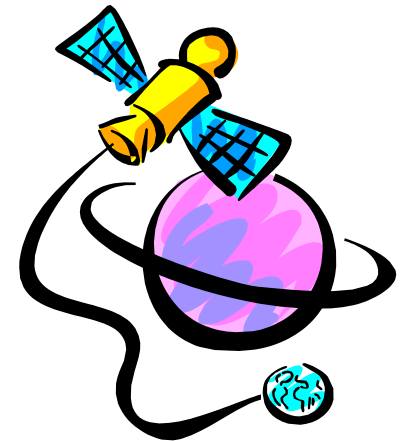
Economic Accounts

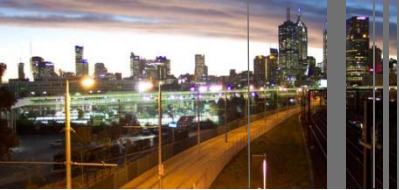
- The Australian System of National Accounts (ASNA) is a comprehensive framework used to produce a consistent set of economic accounts for all productive activities.
- Underlying the ASNA is the *Australian and New Zealand Standard Industrial Classification* (ANZSIC).
- ANZSIC is used to group together similar firms according to the primary goods and services which they produce.



Satellite Account

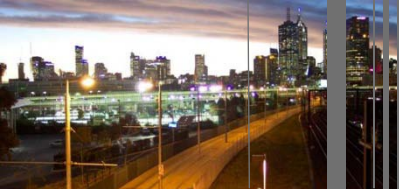
- The form food can take is quite diverse, which means that no one industry within ANZSIC covers all aspects of food production.
- ASNA has flexibility within the National Accounts to produce a set of economic accounts which cut across different industries, via the use of a Satellite Account.





Satellite Account

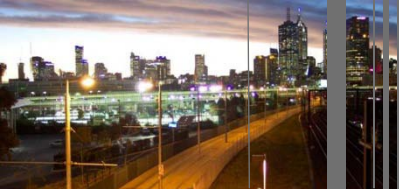
- Satellite Accounts allow a selected topic to be examined while maintaining the concepts and structures of the core accounts.
- Examples of Satellite Accounts include:
 - Tourism.
 - Information & Communication.
 - Technology and Non-Profit Institutions.
- Have Benchmark Years, which the we have the most available information.



Food Industries : Direct & Indirect

- Direct – Get their hands on the food. E.g. Growers, processors, retailers etc.
- Indirect don't deal with the food as their primary business.
 - E.g. Sheet metal producer provide input for tin cans.





Economic Contribution of Food to Victoria

- Share of Gross Value Added

	1998-99	2001-02	2004-05
Direct Share	10.7%	11.3%	10.4%
Indirect Share	6.0%	5.8%	5.9%
Total	16.6%	17.1%	16.3%

- Comparison to other industries

	1998-99	2001-02	2004-05
Finance & Insurance	7.2%	7.8%	8.4%
Manufacturing	17.3%	15.5%	15.4%
Retail	6.4%	6.1%	6.4%
Property & Business Services	13.0%	14.1%	13.8%

Food Employment in Victoria

- Employment

	Principal Industries			Peripheral Industries		
	Full-time	Part-time	Total	Full-time	Part-time	Total
1998-99	199,000	43,000	242,000	82,000	32,000	114,000
2001-02	164,000	46,000	210,000	86,000	36,000	122,000
2004-05	194,000	45,000	239,000	87,000	37,000	124,000

- Share of Employment

	1998-99	2001-02	2004-05
Direct Share	11.3%	11.1%	9.6%
Indirect Share	5.3%	5.2%	5.0%
Total	16.6%	16.2%	14.7%

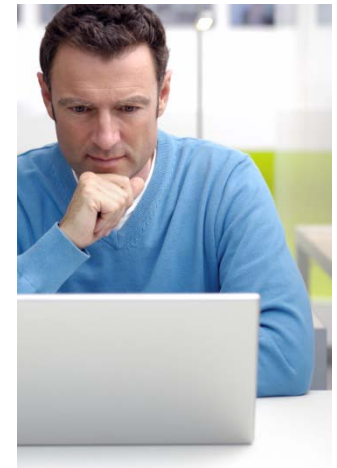


Economic Contribution of Food to Melbourne

- Employment

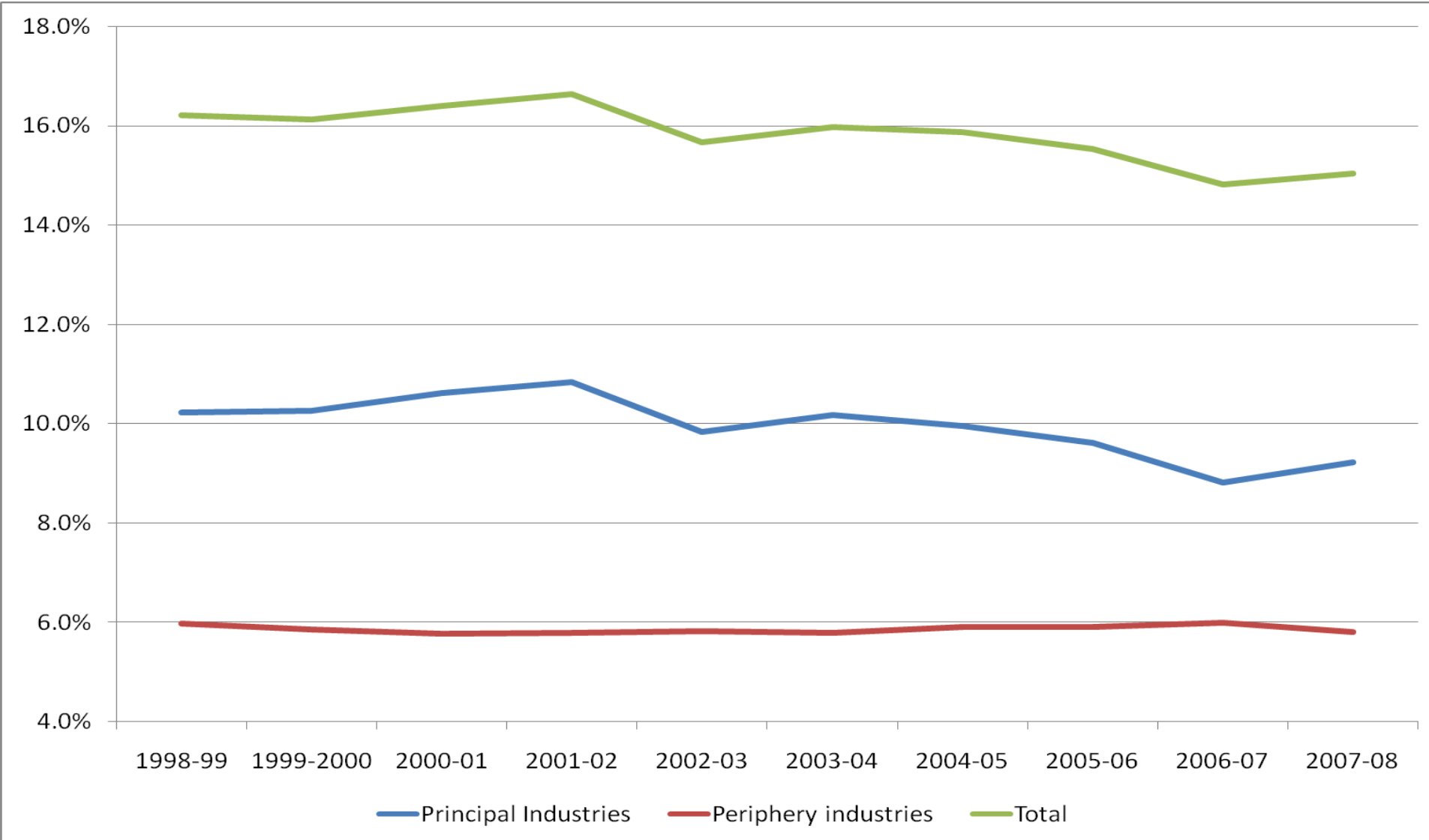
	Principal Industries			Peripheral Industries		
	Full-time	Part-time	Total	Full-time	Part-time	Total
1998-99	99,000	21,000	120,000	63,000	24,000	87,000
2001-02	71,000	20,000	91,000	66,000	27,000	93,000
2004-05	91,000	21,000	112,000	67,000	29,000	96,000

- But all this is a few years out of date.
- What is happening now?



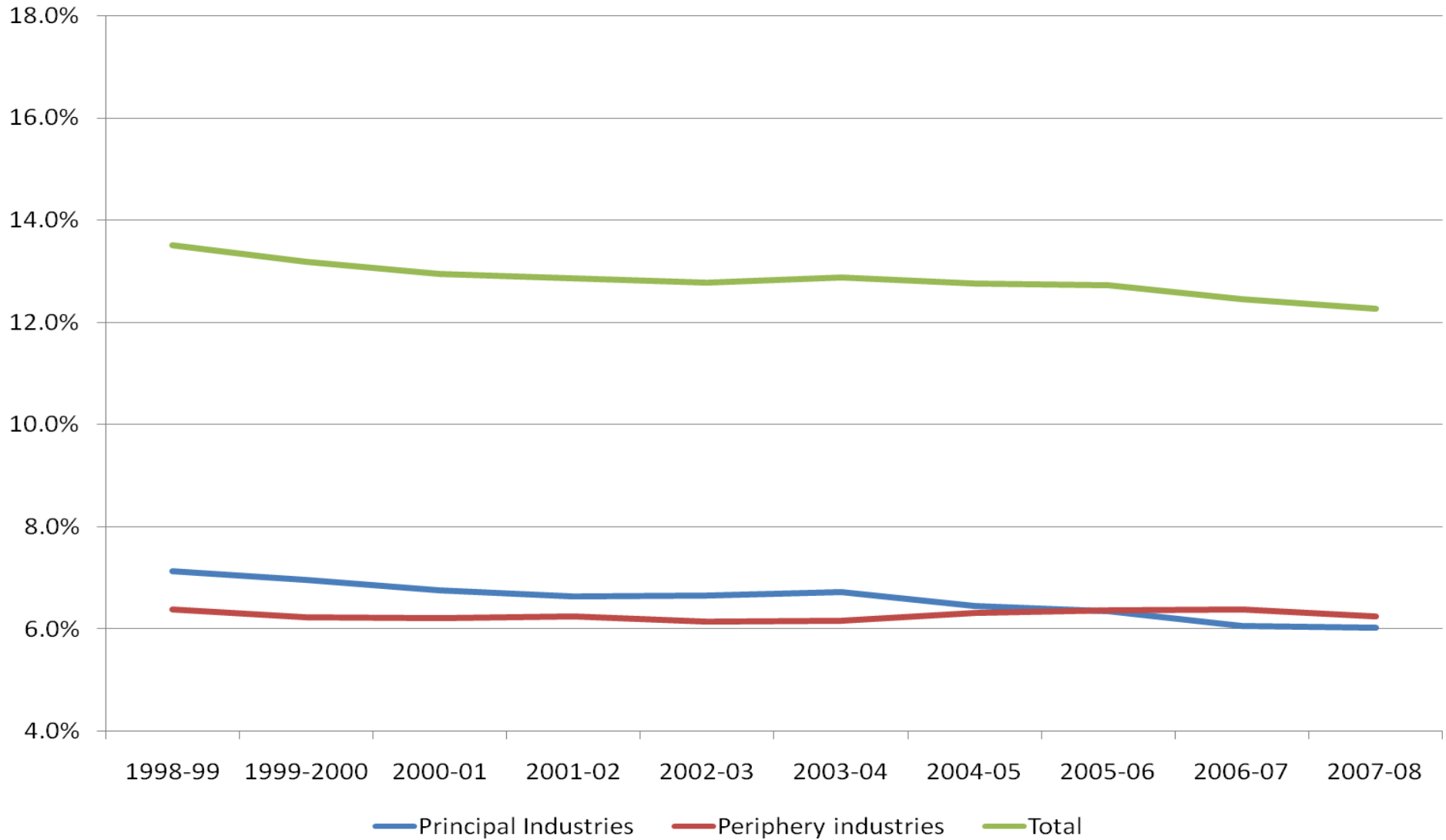


Contribution of Food to the Victorian Economy



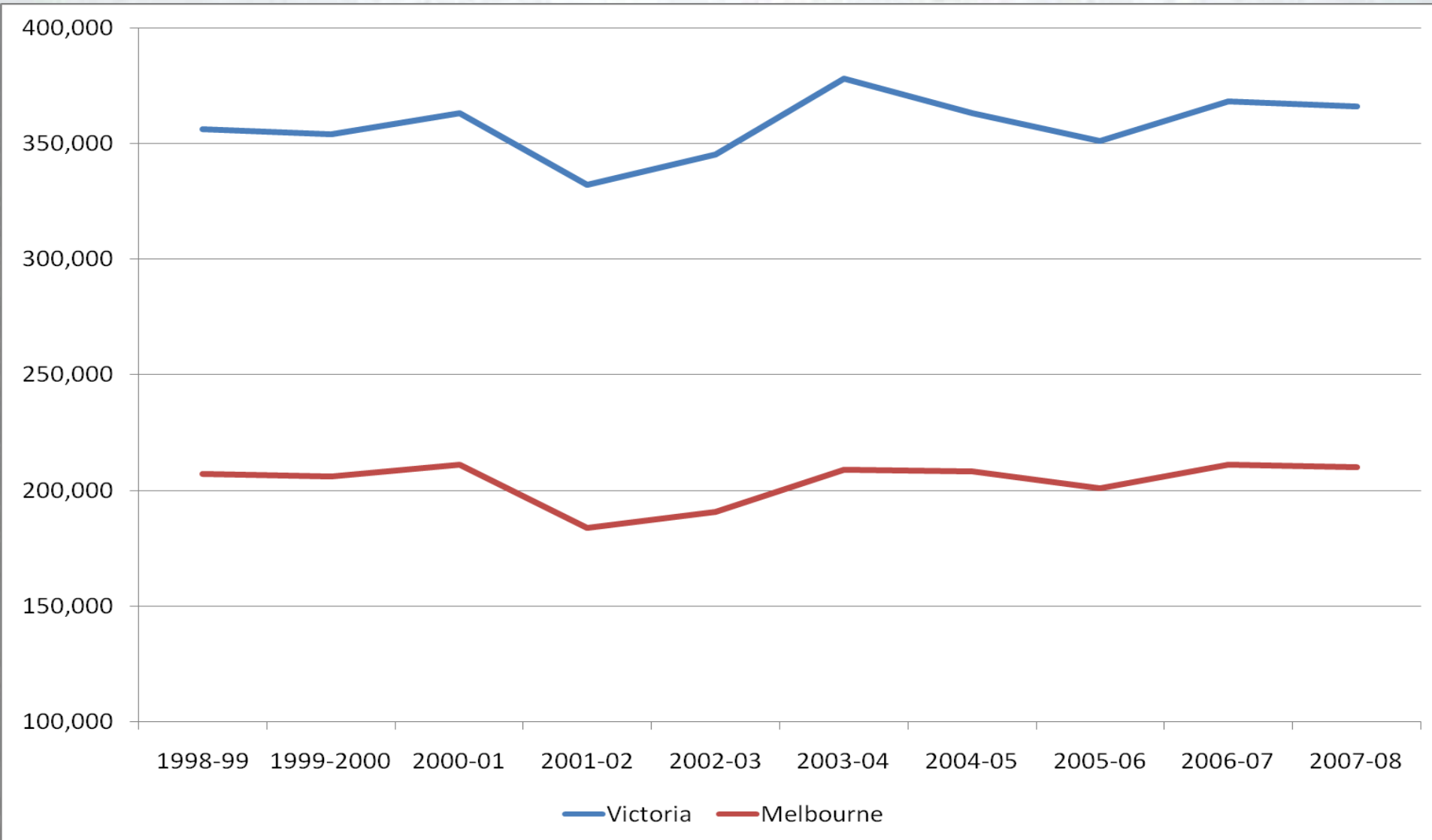


Contribution of Food to the Melbourne Economy





Food Employment





The End